

## BREAKFAST CLUB AND AFTER SCHOOL CLUB - KS2

BREAKFAST CLUB WILL BE OPEN FROM 7.45AM

AFTER SCHOOL CLUB WILL BE OPEN FROM 3.15PM TO 5.15PM

PLEASE SEE INFORMATION BELOW ON HOW TO ENTER AND EXIT KS2 SITE.

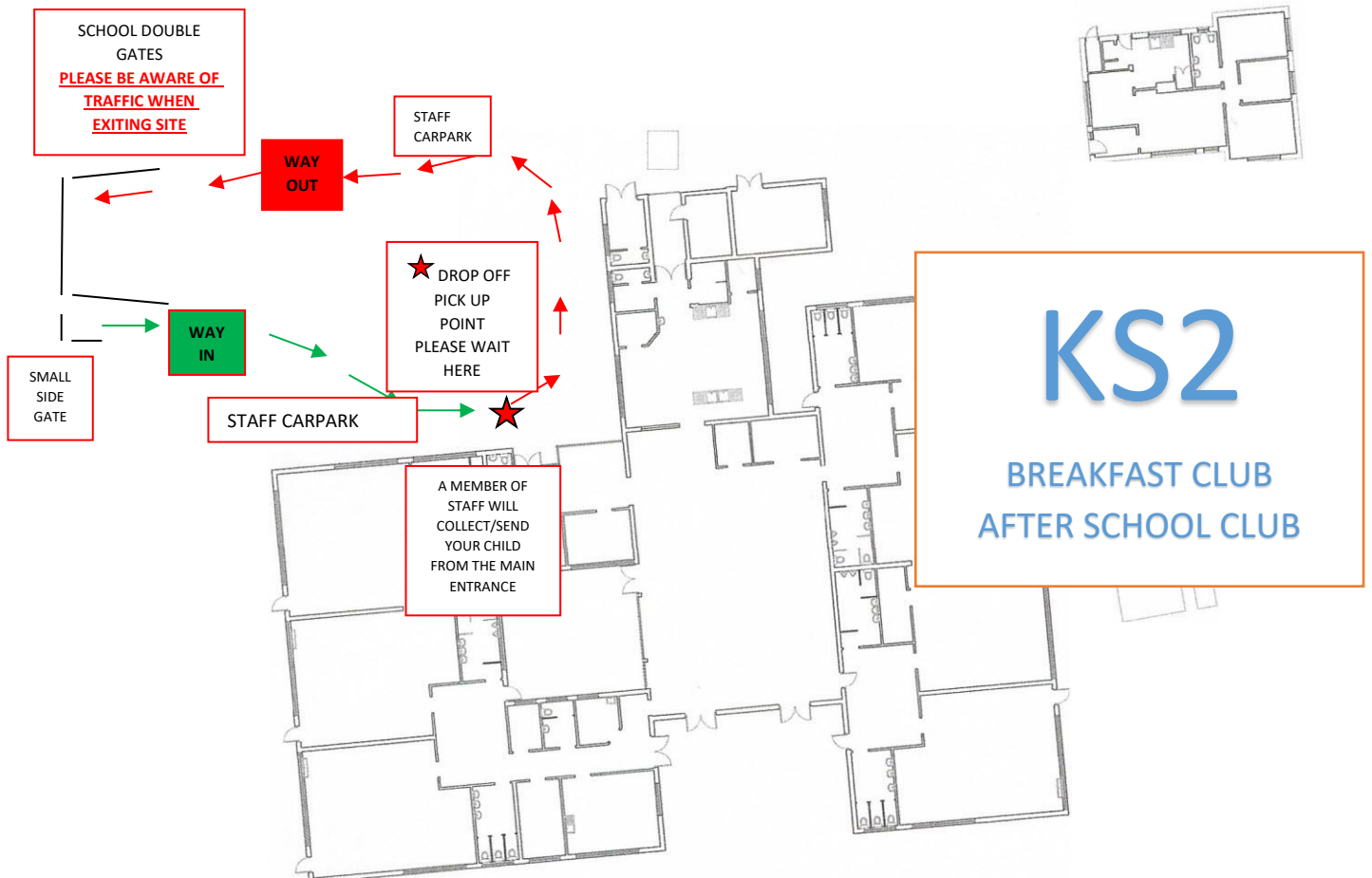
You **MUST** complete the form and return to school by Friday of that week to secure your place at Breakfast Club and After School Club for the week ahead.

Priority will be given to Key Worker parents.

The form is sent out every Thursday, it is also available on our website.

Please wear a face mask when entering the school grounds. Thank You.

2



**DUE TO SAFETY OF PARENTS/STAFF AND CHILDREN**  
**PLEASE DO NOT BRING YOUR CAR INTO THE SCHOOL CAR PARK**  
**OR USE THE ENTRANCE AS A DROPPING OFF/TURNING POINT.**  
**THE CAR PARK IS FOR STAFF USE ONLY**

## BREAKFAST CLUB AND AFTER SCHOOL CLUB - KS1/NURSERY CHILDREN

BREAKFAST CLUB WILL BE OPEN FROM 7.45AM

AFTER SCHOOL CLUB WILL BE OPEN FROM 3.00PM TO 5.15PM

PLEASE SEE INFORMATION BELOW ON HOW TO ENTER AND EXIT KS1 SITE.

You **MUST** complete the form and return to school by Friday of that week to secure your place at Breakfast Club and After School Club for the week ahead.

Priority will be given to Key Worker parents.

The form is sent out every Thursday, it is also available on our website.

Please wear a face mask when entering the school grounds. Thank You.

4.

